

The Town of Jesus
CAPERNAUM

Site Interpretation and Presentation

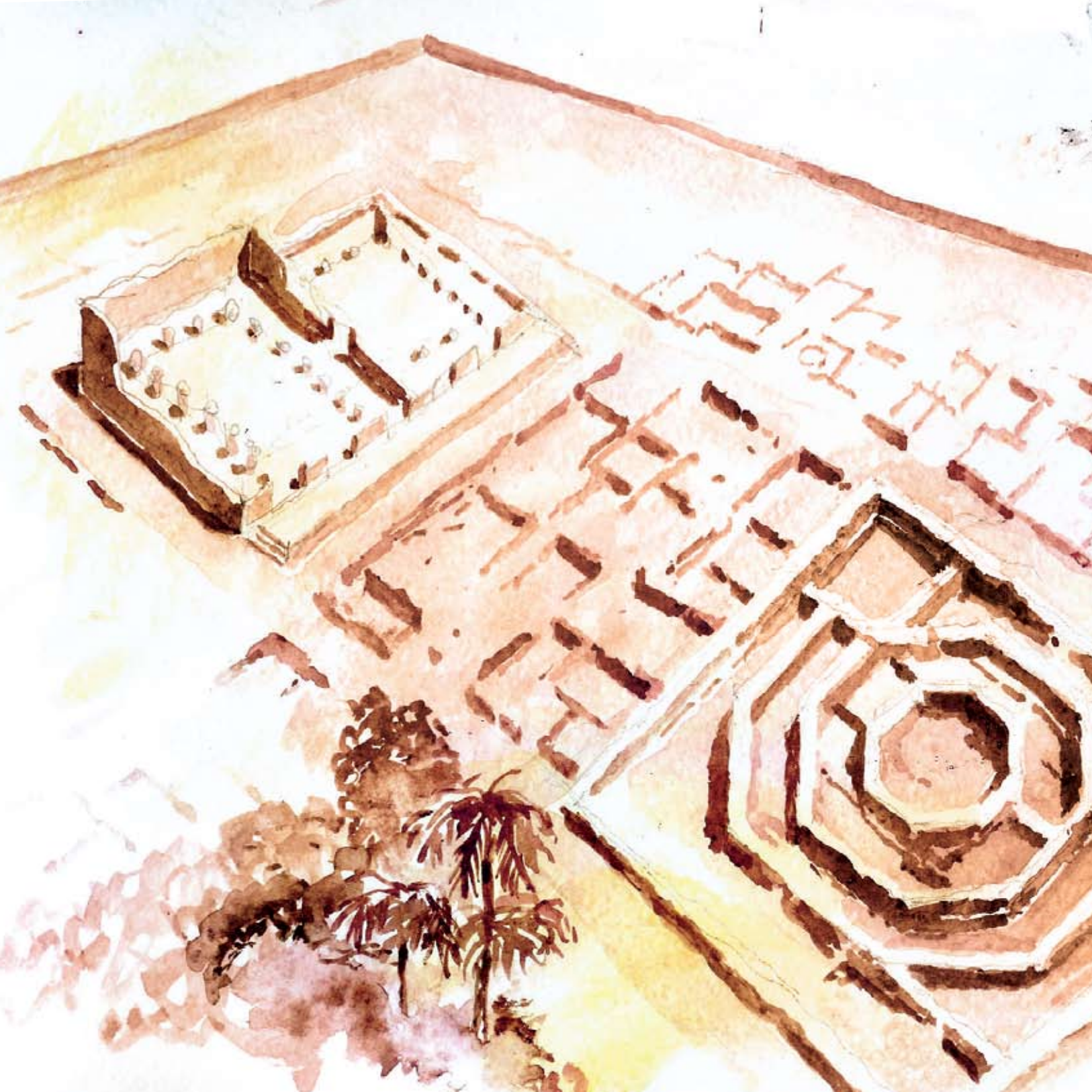
A project of the Custody of the Holy Land



The Town of Jesus
CAPERNAUM

Site Interpretation and Presentation

A project of the Custody of the Holy Land





A PROJECT FOR THE HOLY LAND

A UNIQUE PROJECT FOR THE HOLY LAND

“This small, 2000-year-old village —scene of some of the most significant events of Jesus’ ministry in Galilee, the cradle of the Gospel— has profound significance in the history of Christianity and is a source of inspiration for millions of believers. Capernaum is a pearl in the Holy Land’s crown of historical and religious sites. As such, Capernaum deserves to be presented to the public in a manner that evokes the messages hidden in its remains. By promoting the Capernaum site project, the Custody of the Holy Land will create a world model for the conservation, interpretation and presentation of a Holy Place”.

Fr. Pierbattista Pizzaballa,
Custos of the Holy Land

THE PLACE

The Capernaum site is located on the northwestern shore of the Sea of Galilee. In biblical times it was a large fishing village and a busy trading center on the Imperial Highway leading to Damascus. Today it is one of the Holy Land's most important holy sites. Capernaum played a unique part in Christ's life and ministry. The Gospels tell us that Jesus left Nazareth to settle here (Mt. 4:12) and made it "his own town" (Mt. 9:1).

The scene of many of Jesus' miracles and teachings, Capernaum was the home of the fishermen Peter, Andrew, James and John when they became his disciples. Levi, later named Matthew, was a tax collector here when he, too, was called to follow Christ.



Acco

Chorazin

Bethsaida

Capernaum

Cana

Magdala

Sea of Galilee

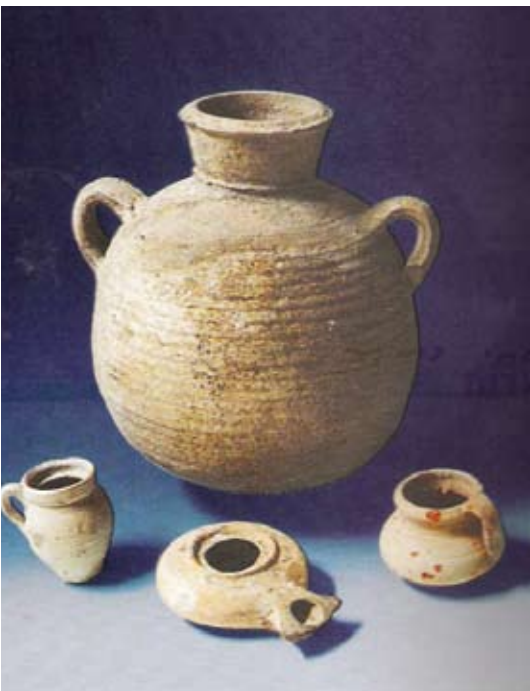
Tiberias

Nazareth

Mt. Tabor

Jordan River





CAPERNAUM REVEALED

Archaeological excavations undertaken in Capernaum since the 19th century have revealed much about domestic and economic life in this ancient town. Finds from private houses, the commercial olive press and the stone vessel workshops all shed light on everyday activities here through the ages.

Capernaum's monumental fifth-century synagogue, built over the remains of the earlier synagogue where Jesus himself taught, was unearthed. But the most significant archaeological discovery was Peter's house, where Jesus healed Peter's mother-in-law (Mk. 1:29-31) and the paralytic man (Mk. 2:1-12). In Byzantine times Christians honored the event by building a Church over the house.







THE PURPOSE OF THE PROJECT



The purpose of the Capernaum Project is to bring the story of the Town of Jesus to life and to transform a simple visit into a moving and memorable experience.

These goals will be achieved through:

- Interpretation and presentation of the site
Mini-exhibits, illustrated models, audio-guides and computer-based presentations will all help visitors make the connection between the site's archaeological remains and the historic events that took place among its stones.
- Site Museum and Interpretation Center
Here, Jesus' Ministry in the Galilee and the story of biblical Capernaum are brought to life. The museum's original artifacts and interactive displays and the interpretation center's short video put Jesus' miracles and teachings into the context of daily life two millennia ago. This building will include spaces for temporary and permanent exhibitions, as well as interactive areas.
- Conceptual reconstruction of the Biblical Landscape
The traditional, regional vegetation of olive trees, vineyards, pomegranates, palm and fig trees combine to reproduce the sights and smells that transport visitors back to the time of Jesus.
- Storage area and restoration workshop
This building will provide facilities for ongoing research and restoration, along with storage space for archaeological finds and architectural remains not on display in the museum.



A NEW PLAN FOR THE FUTURE

The guiding principle behind the design of the new Site Presentation and Interpretation Center is to help tourists, pilgrims and other visitors to understand and sense on a deeper level the momentous events that took place here two thousand years ago.

In a place that celebrates human culture, history and religion, a place conducive to both learning and meditation, the motto is Knowledge, Understanding, Commemoration.

Christ's Light Enlightens All

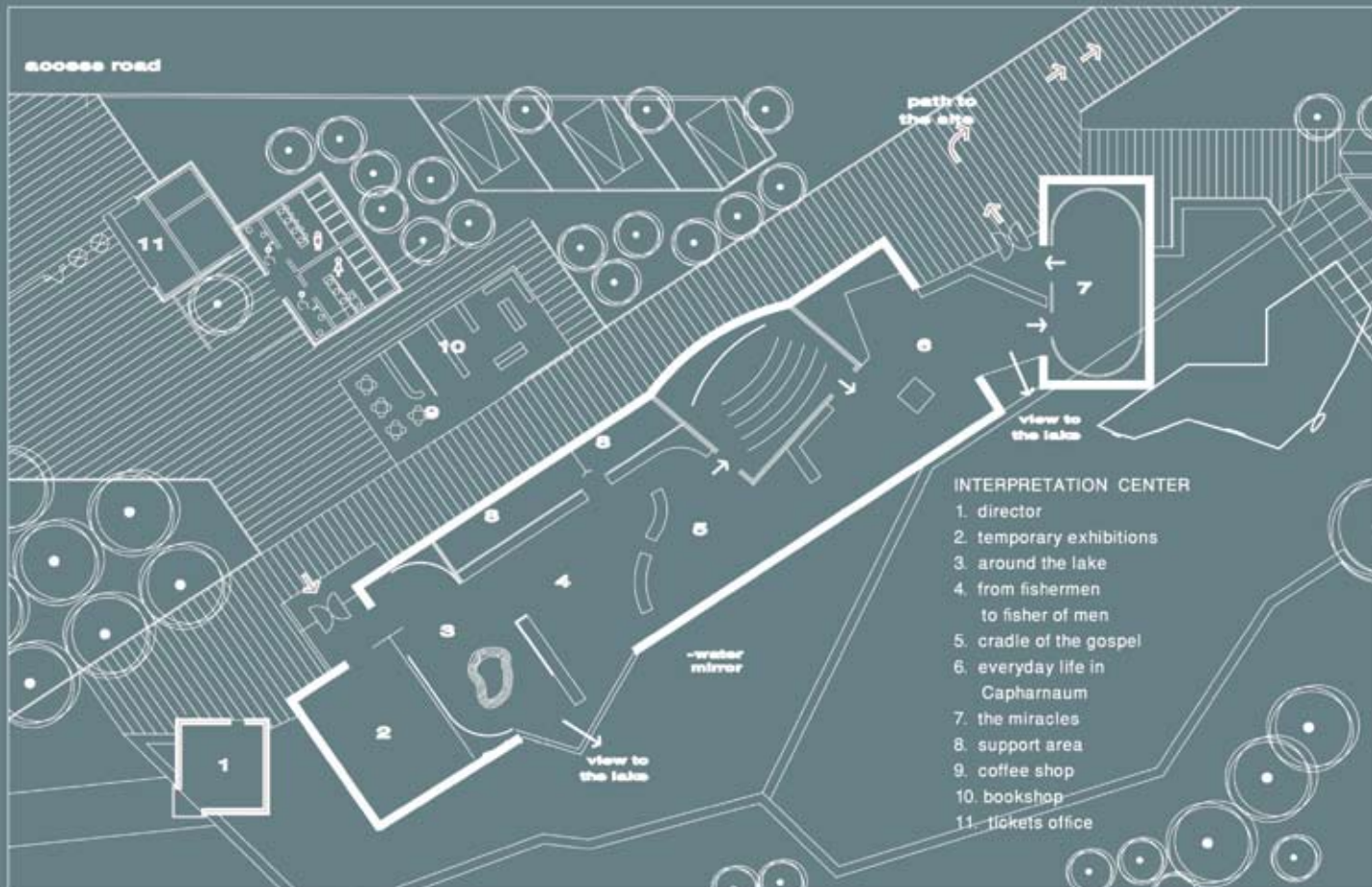


THE INTERPRETATION CENTER MUSEOLOGICAL CONCEPT

The Interpretation Center's main objective is to introduce visitors to the story of Capernaum and its surroundings before, during and after the time of Jesus. His life and village life around the lake will be presented using both traditional museum display methods and modern multi-media. In this way, environmental reconstructions, models, 3D animation, video presentations and computerized simulations will all enhance visitors' understanding of original artifacts, ancient manuscripts, textual and graphic materials.

The displays will be organized around four main, interrelated topics.





THE SEA OF GALILEE

1. AROUND THE LAKE

Beginning the experience, the visitor is introduced to the landscape of Jesus' ministry in the Galilee through an overall view of the region. The lake and its surrounding hills and valleys are represented in this space. The history of the major places associated with Jesus' ministry will be presented through interactive multi-media stations.

CAPERNAUM
BETHSAIDA
MAGDALA
TIBERIAS
CHORAZIN





FISHERS OF MEN

2. FROM FISHERMEN TO FISHERS OF MEN

A suggestive, three-dimensional reconstruction of the fishermen's environment, featuring real objects, evokes the experience of the extraordinary simplicity of Jesus and his disciples.

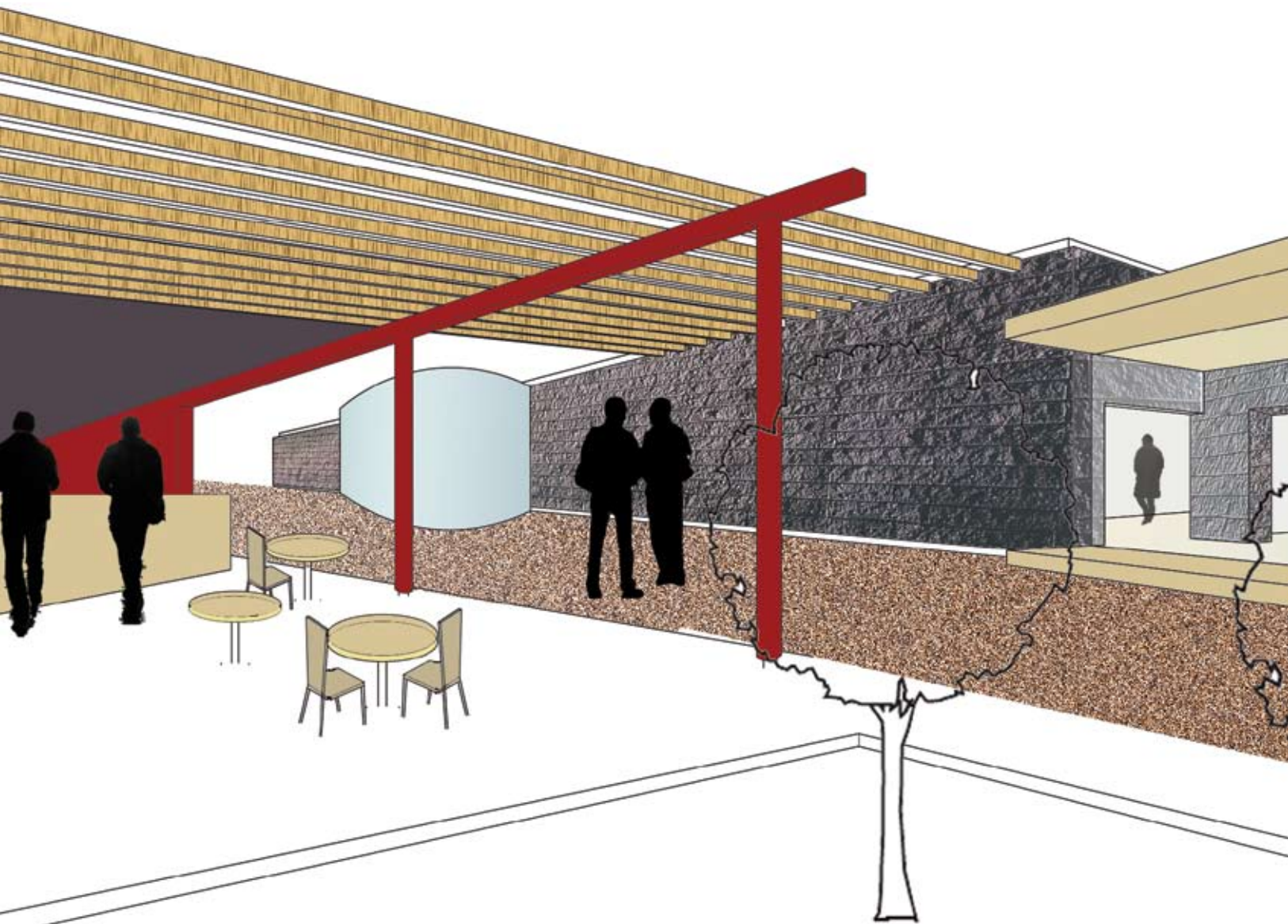
3. THE CRADLE OF THE GOSPEL

This section focuses mainly on Jesus' miracles and preaching. Images based on the Gospel account will be presented, including a computer-aided graphical presentation of Peter's house and its development as a place of veneration.

4. EVERYDAY LIFE IN THE "TOWN OF JESUS"

The main exhibit presents the archeological evidence of Capernaum. Its aim is to give the visitor a glimpse into the daily life of village inhabitants in the first century AD. The story will be told through interplay of original objects, models, film, multimedia reconstructions and animations, together with interactive components.

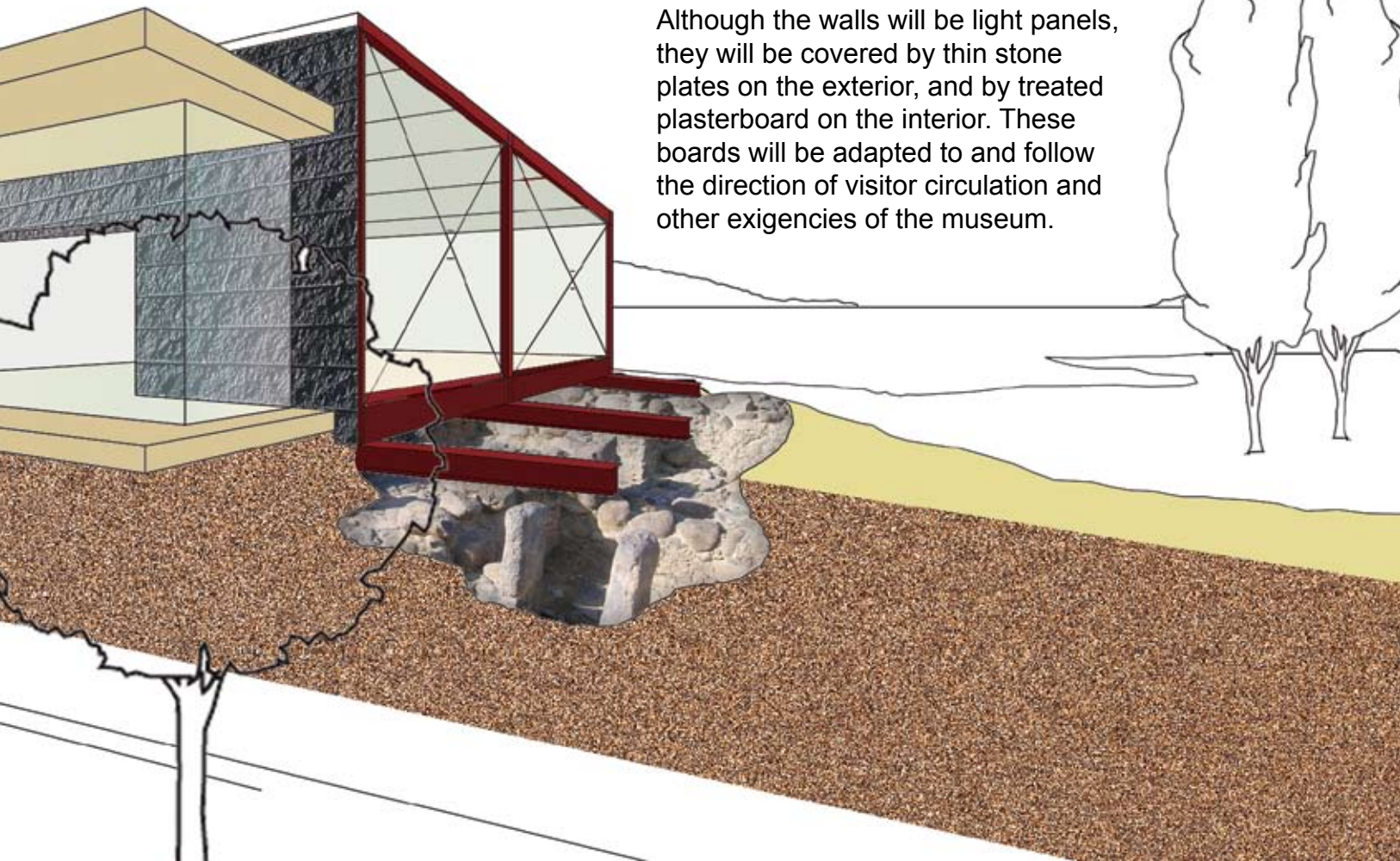




THE BUILDING FLEXIBILITY AND REVERSIBILITY

“Flexibility and reversibility” sums up the overall technical concept. As the Interpretation Center and all other facilities will be built on unexcavated areas, a special building technique will be employed to permit future excavations. Flexible buildings on a metallic rail system are proposed. The buildings will be constructed with a modular, metallic frame, designed for easy displacement on wheels. (See diagrams.)

Although the walls will be light panels, they will be covered by thin stone plates on the exterior, and by treated plasterboard on the interior. These boards will be adapted to and follow the direction of visitor circulation and other exigencies of the museum.



ESTIMATED COSTS

1. The Interpretation Center - building and supporting areas, including special engineering techniques for the buildings' movability:	960 sq. m. x \$1500 =	\$1,440,000
2. Exhibit design and presentation devices	600 sq. m. x \$2000 =	\$1,200,000
3. Site landscape in front of the Visitors Center and connection to the site, including parking area:		\$280,000
4. Site presentation of the archaeological remains and interpretation spots, including waterfront development area:		\$500,000
5. Restoration Workshop & Storage area	200 sq. m. x \$600 =	\$120,000
	Subtotal:	\$3,540,000
6. Professional consultations fees:	15%	\$531,000
7. Miscellaneous expenses:	12%	\$424,800

Grand Total \$4,495,800





CAPERNAUM

A project promoted by the Custody of the Holy Land

Conceptual Design and Museological Presentation : Renee Sivan
Architecture : Peter Bugod and Eunice Figueiredo
Scientific Advice: Studium Biblicum Franciscanum

Graphic Design: Eran Zirrman
Painting: Piero Casentini

Information and donations: TERRA SANTA Association – NGO of the Custody of the Holy Land – t.saltini@gmail.com